

Third Visual Properties Driving Visual Preference workshop



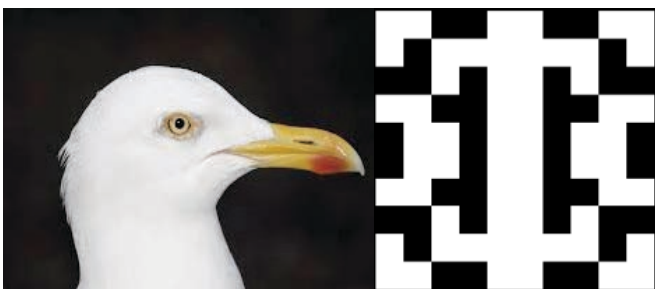
June 8th 2017

University of Liverpool

Academic Boardroom (room 2.35 2nd floor)

Eleanor Rathbone Building

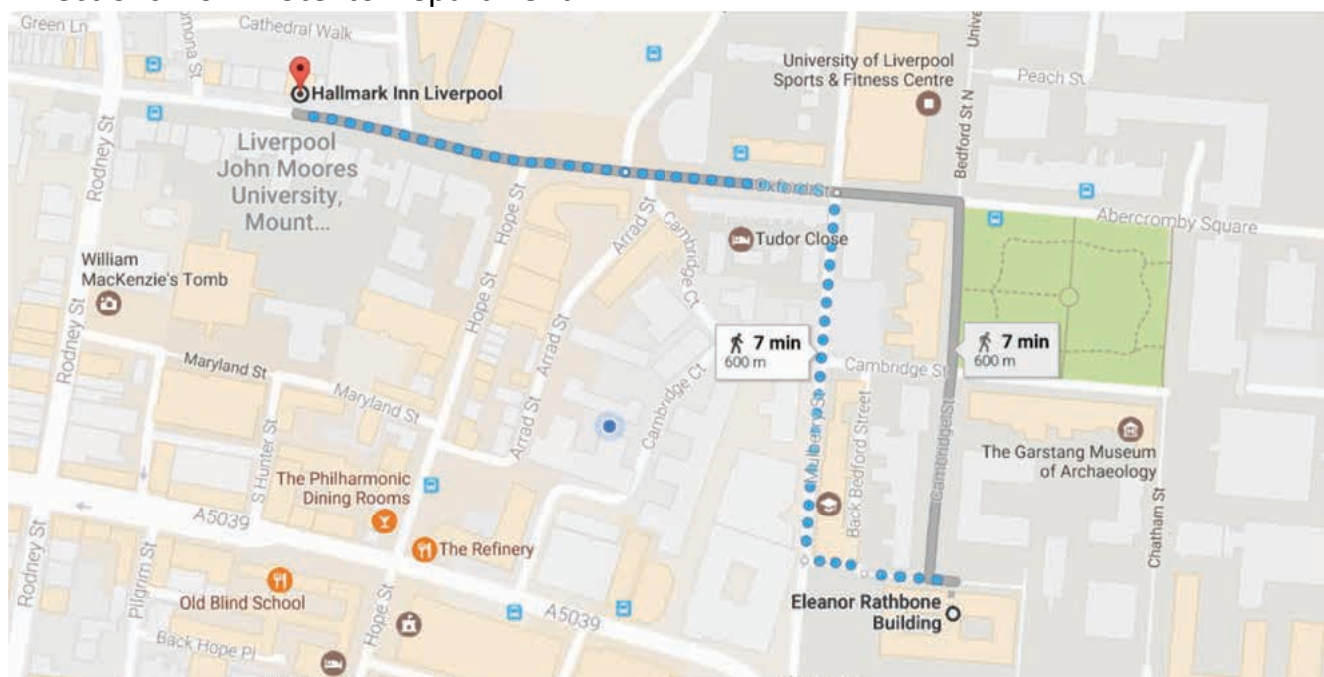
<http://www.bertamini.org/lab/vpdvp.html>



Programme

- 12:00-13.30** **Welcome**
- 13:30-13:45 Symmetry and curvature: what we have learned by comparing preference tasks? (**Marco Bertamini**)
- 13:45-14:00 Universal laws of aesthetic preference? (**Alexis Makin**)
- 14:00-14:15 Testing the preference for curvature in works of art (**Robert Pepperell**)
- 14:15-14:30 Bottom-up versus top-down processing in the preference for curvature (**Enric Munar**)
- 14:30-14:45 Order, complexity, and aesthetic preferences for neatly organized compositions (**Johan Wagemans**)
- 14:45-15:30** **Discussion over coffee**
- 15:30-16:00 Cross-cultural effects in aesthetics? Two studies (**Chris McManus**)
- 16:00-16:30 Effects of symmetry on aesthetics - and its interaction with expertise (**Helmut Leder**)
- 16:30-17:00 Visual cues driving face preferences (**David Perrett**)
- 17:00-17:30 Additional guest contributions and discussion

Directions from Hotel to Department



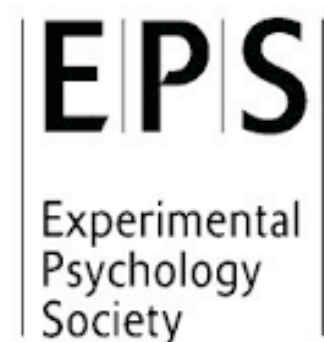
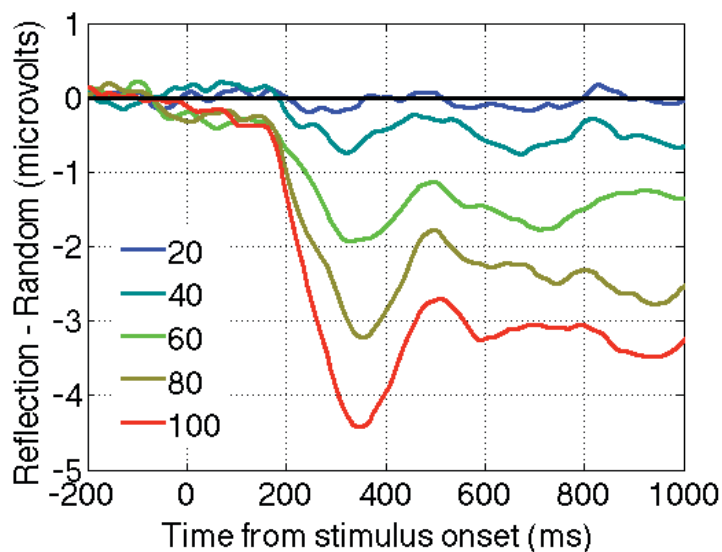
Recent developments in the neuroscience of symmetry perception

Friday June 9th 2017

University of Liverpool

Academic Boardroom (room 2.35 2nd floor)

Eleanor Rathbone Building



<http://www.bertamini.org/lab/symmetryWorkshop.html>

Papers will contribute to the special issue in the journal *Symmetry*:
"Symmetry-Related Activity in Mid-Level Vision"

http://www.mdpi.com/journal/symmetry/special_issues/Symmetry-Related_Activity_in_Mid-Level_Vision

Programme

- 09:00-09:45** **Welcome and discussion of UK election results**
- 09:45-10:00 Welcome to symmetry neuroscience workshop (**Marco Bertamini**)
- 10:00-10:30 Assessing perception of symmetry with transcranial magnetic stimulation (**Silvia Bona**)
- 10:30-11:00 Visual cortical responses to symmetry: Revisiting Sasaki, Vanduffel, Knutsen, Tyler and Tootell, 2005 (**Antony Morland**)
- 11:00-11:30** **Coffee**
- 11:30-12:00 Seven claims about the extrastriate symmetry network (**Alexis Makin**)
- 12:00-12:30 Measuring Integration Processes in Visual Symmetry with Frequency-tagged EEG (**Nihan Alp, Peter J. Kohler, Naoki Kogo, Johan Wagemans & Anthony M. Norcia**)
- 12:30-13:00 Aesthetic judgment of beauty of novel graphic patterns: behaviour and physiological correlates (**Thomas Jacobsen**)
- 13:00-14:00** **Lunch**
- 14:00-14:30 Mechanisms of mirror-symmetry perception in human vision (**Elena Gheorghiu**)
- 14:30-15:00 Symmetry and the cognitive architecture of vision (**Peter van der Helm**)
- 15:00-15:30** **Coffee**
- 15:30-15:45 Neurophysiological investigation of the role of symmetry in figure-ground segregation (**Giulia Rampone**)
- 15:45-16:00 The effect of number of colors and luminance-polarity on the electrophysiological response to mirror-symmetry (**Damien Wright**)
- 16:00-16:15 Opposition and sameness: two basic components of adults' naive idea of symmetry (**Ivana Bianchi**)
- 16:15-16:30 Gestalt principles and feedforward processes in object recognition (**Rama Chakravarthi**)
- 16:30-16:45 Temporal properties of mirror symmetry perception (**Rebecca Sharman**)
- 16:45-17:00 **Discussion** – What would a proper understanding of symmetry perception look like?
- 17:00-18:00** **Lab visits**
- 19:30 **Social Dinner (Bold Street)**

Organizers

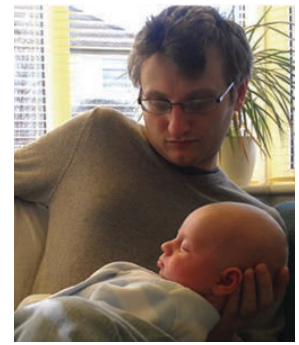
Alexis D.J. Makin

Alexis Makin studied Psychology and Neuroscience at the University of Manchester 2003-6. He is now a Lecturer in psychology at the University of Liverpool. He works on symmetry perception, preferences and how people update mental representations at the right speed. For more information and publications visit: <https://scholar.google.co.uk/citations?user=RArXnR8AAAAJ>



Marco Bertamini

Marco Bertamini studied psychology at the University of Padova, Italy, and then at the University of Virginia, USA. He moved to Liverpool in 1999, where he established the Visual Perception Laboratory. His interests are broad across visual perception and cognition. For more information visit www.bertamini.org/lab/



The screenshot shows the Symmetry journal website. At the top, there is a search bar with fields for Title/Keyword, Author, Article Type, Journal, Section, and Special Issue. Below the search bar is a 'Journal Menu' with links to Symmetry Home, About this Journal, Journal Awards, Journal Statistics, Most Cited Articles, Indexing & Abstracting, Instructions for Authors, Special Issues, Publication Files, Editorial Office, and Editorial Board. There is also an 'E-Mail Alert' section and a 'Journal Browser' with volume and issue dropdowns. The main content area features a 'Special Issue "Symmetry-Related Activity in Mid-Level Vision"' with a list of special issue editors: Prof. Dr. Marco Bertamini, Dr. Alexis Makin, and Dr. Zaira Cattaneo. Each editor's name is followed by their affiliation, website, and email address, along with their research interests.

Friday Night Dinner Location



First Name	Surname	Email	Affiliation
Marco	Bertamini	m.bertamini@liverpool.ac.uk	University of Liverpool
Ivana	Bianchi	ivana.bianchi@unimc.it	University of Macerata
Carole	Bode	bodec@edgehill.ac.uk	Edge Hill University
Silvia	Bona	silvia.bona@unimib.it	University of Milan, Bicocca
Luc	Boutsen	l.boutsen@aston.ac.uk	Aston University
Gayle	Brewer	gbrewer@liverpool.ac.uk	University of Liverpool
Rama	Chakravarthi	rama@abdn.ac.uk	University of Aberdeen
Elena	Gheorghiu	elena.gheorghiu@stir.ac.uk	University of Stirling
Timo	Giesbrecht	Timo.Giesbrecht@unilever.com	Unilever
Melanie	Hancock	14002722@hope.ac.uk	Liverpool Hope
Neil	Harrison	harrison@hope.ac.uk	Liverpool Hope
Johan	Hulleman	johan.hulleman@manchester.ac.uk	University of Manchester
Thomas	Jacobsen	jacobsen@hsu-hh.de	Helmut Schmidt University Hamburg
Bruce	Keefe	bruce.keefe@york.ac.uk	University of York
Rebecca	Lawson	r.lawson@liverpool.ac.uk	University of Liverpool
Helmut	Leder	helmut.leder@univie.ac.at	University of Vienna
Szilvia	Linnert	s.linnert@lancaster.ac.uk	University of Lancaster
Alexis	Makin	alexis.makin@liverpool.ac.uk	University of Liverpool
Chris	McManus	i.mcmanus@ucl.ac.uk	UCL
Padraic	Monaghan	p.monaghan@lancaster.ac.uk	University of Lancaster
Antony	Morland	antony.morland@york.ac.uk	University of York
Enric	Munar	enric.munar@uib.cat	University of the Balearic Islands
Ruth	Ogden	R.S.Ogden@ljmu.ac.uk	Liverpool John Moores
Letizia	Palumbo	palumb@hope.ac.uk	Liverpool Hope
Galina	Paramei	parameg@hope.ac.uk	Liverpool Hope
Eugenio	Parise	e.parise@lancaster.ac.uk	University of Lancaster
Robert	Pepperell	rpepperell@cardiffmet.ac.uk	University of Cardiff
David	Perrett	dp@st-andrews.ac.uk	St Andrews
Giulia	Rampone	rampong@hope.ac.uk	Liverpool Hope
Alessandro	Soranzo	A.Soranzo@shu.ac.uk	Sheffield Hallam
Rebecca	Sharman	rebecca.sharman@stir.ac.uk	University of Stirling
Nikki	Street	nichola.street@staffs.ac.uk	Staffordshire University
Peter	Van der Helm	peter.vanderhelm@kuleuven.be	University of Leuven
Richard	Vernon	rv519@york.ac.uk	University of York
Johan	Wagemans	johan.wagemans@kuleuven.be	University of Leuven
Rebecca	Waterfield	becky.waterfield@hotmail.com	University of Lincoln
Damien	Wright	damien.wright@stir.ac.uk	University of Stirling